



“The Hall for All is a bold, uncompromising statement that the children and the community are worth it. Rather than taking them to places where they can only be visitors and guests, this is a centre of their own – somewhere wonderful they call home, that makes them proud and helps them aspire to greater things.”

CRISPIN WOODHEAD
CEO, ORCHESTRA OF THE AGE OF ENLIGHTENMENT

BIG GIVE CASE STUDY

Acland Burghley’s Brutalist Assembly Hall, designed by architects Howell, Killick, Partridge & Amis in the 1960s, has always been a trailblazer.

It’s a state secondary school hall that is also a world-class arts and performance venue. Multi-faceted in nature, the Hall has hosted events as various as community opera, boxing matches and experimental dance productions.

It currently houses an internationally renowned orchestra that works closely with the school’s cohort of students and leads a fantastic collaboration for students with additional needs.

Plans are also afoot to establish the first ever Museum of Brutalist Architecture in its hexagonal, concrete embrace. Conceived to serve both the school and the wider community, the Hall, affectionately known as the Hex, is an inspirational building that is as inclusive as it is visionary.



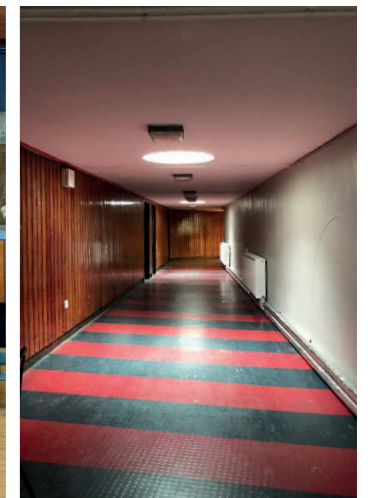
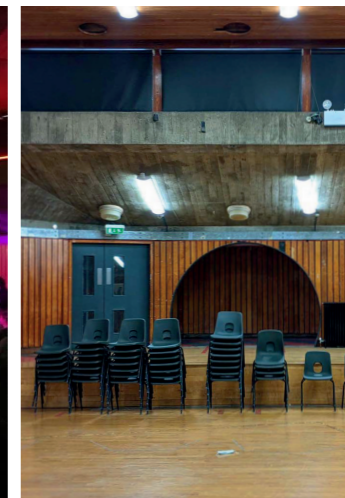
THE PROBLEM

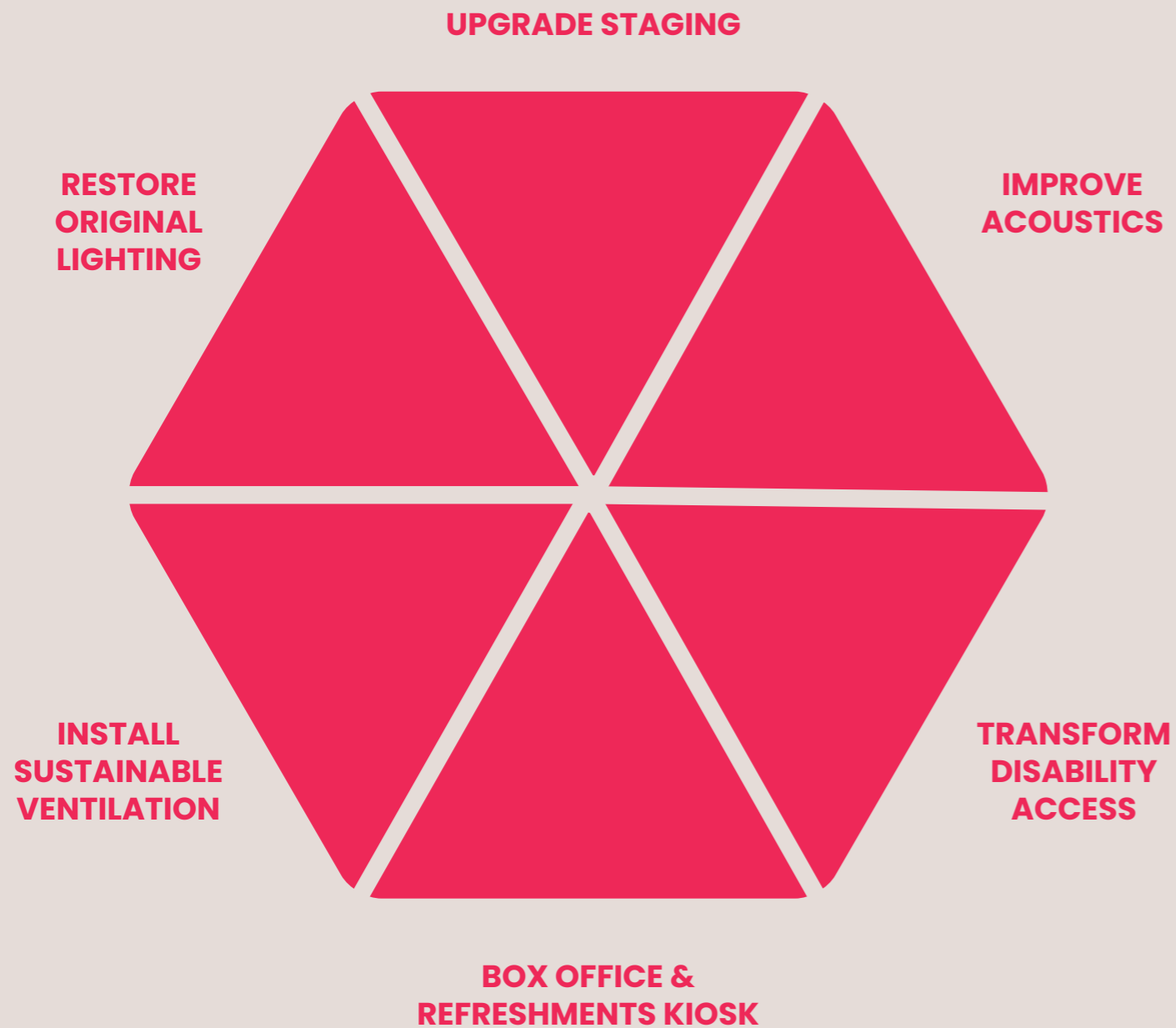
Acland Burghley has consistently held out, in the teeth of austerity and declining arts funding, to offer its students outstanding creative provision, as evidenced by gaining a prestigious Artsmark Platinum Award.

The Assembly Hall is the embodiment of the school's resilience and commitment to creative excellence. It's a plucky outlier, a six-sided beacon of hope.

But, wear and tear over many decades means the Hall is no longer fit for purpose. There is extensive structural and aesthetic damage. And, crucially, the building is not as accessible as it should be.

Without investment, the heritage of this unique example of Brutalist architecture will be lost, alongside its benefits to the 12,000 local people who access it yearly.





THE SOLUTION

Architectural practice Reed Watts have developed proposals to undo the harm and reinvigorate the Hall.

Their approach - developed in close consultation with staff, pupils, parents, local arts groups, residents and the local authority - meets high environmental and sustainability targets while staying sensitive to the building's Brutalist heritage.

The plans will give the Hall a new lease of life for future generations to enjoy.



OUR PARTNERS



Conceived as a standalone venue within the school, but with easy street access, the Hall was always designed with the community in mind.

In the **1960s** and **1970s** the space housed an 800-member youth club and a resident theatre company. The Community-Led Management Board is made up of 13 groups which have a stake in the Hall including Camden Youth Service, the Somali Youth Development Resource Centre, an anti-racist theatre company and local residents. The board is driving plans to ensure the Hall continues to serve the diverse needs of the community.

CLMB members have spoken positively about their involvement.

“The group is driven, collaborative and committed to creating an inclusive space for the community through this project. There is a genuine effort to listen to different perspectives, and the group’s overall vision feels positive and community centred.”

COMMUNITY-LED MANAGEMENT BOARD MEMBER

“I have really enjoyed being a part of this group. The way it has been managed has allowed all voices to be heard equally and all ideas and opinions to be equally weighted. It’s refreshing to join a board that doesn’t promote a sense of hierarchy, but instead, a sense of inclusivity.”

COMMUNITY-LED MANAGEMENT BOARD MEMBER

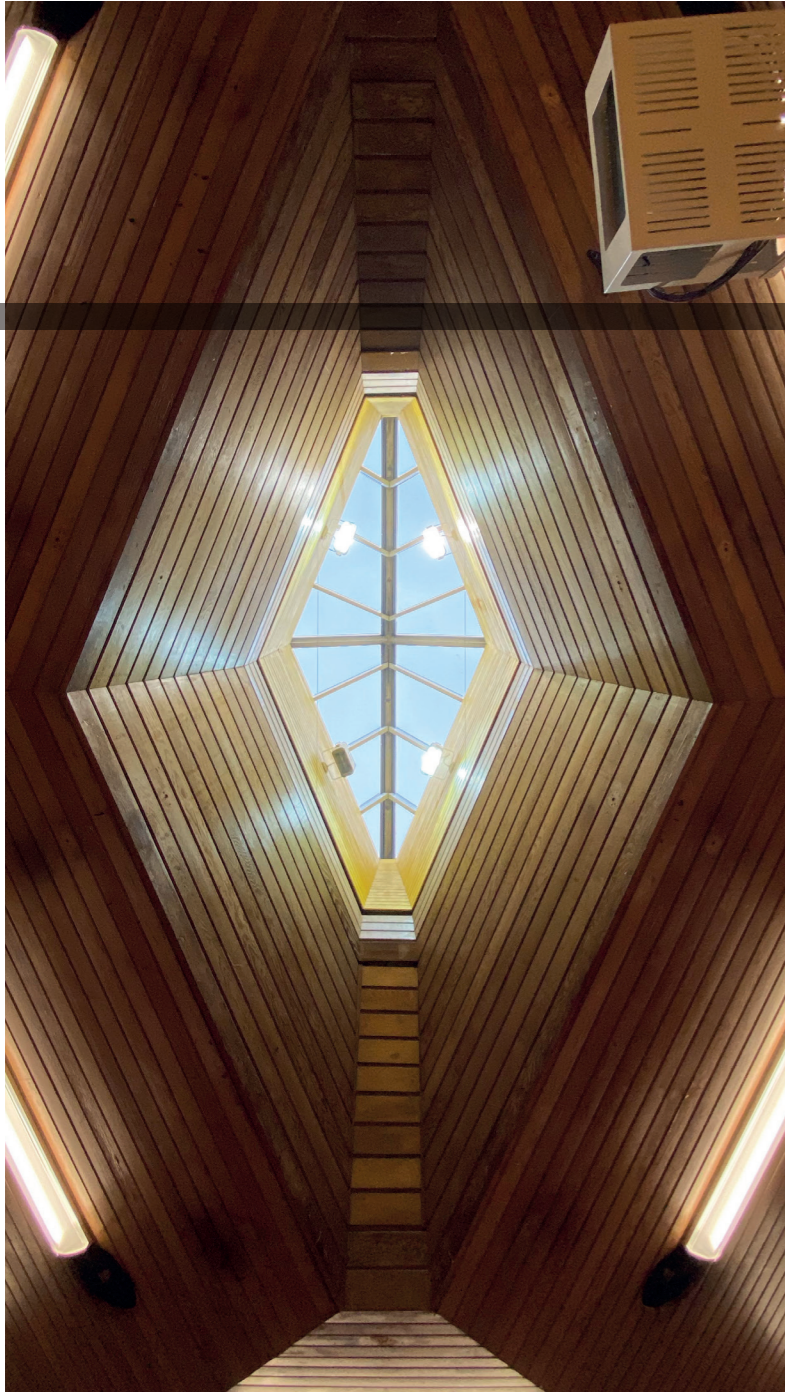
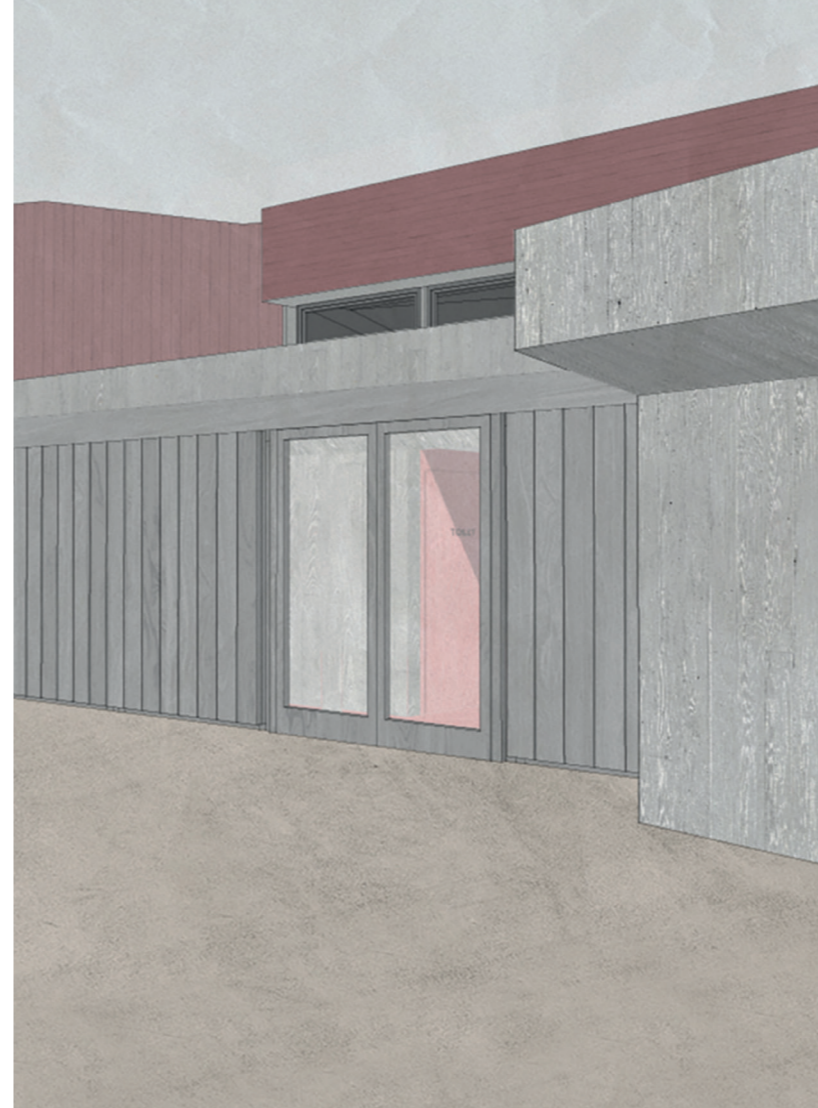


IMAGE CREDIT REED WATTS

PLANS FOR THE FUTURE

- Wellbeing events with elderly residents from local care homes.
- Guided walks and audio-trails celebrating architectural history.
- Cross-generational projects and memories recorded and hosted in the digital Museum of Brutalist Architecture.
- International evenings and food events.
- A photography project of the faces of people who have been part of the school community: sixty portraits for sixty years of Brutalist architecture.
- A Brutalist soundscape for the Hall in collaboration with the OAE Young Producers.
- A playwriting competition inspired by the Brutalist movement culminating in the performance of the winning entry.
- Special events, exhibitions and film screenings in partnership with students and local people.



ENGAGING OUR SCHOOL & LOCAL COMMUNITY

The renovation of the Hall has been an important priority for the school and the local community for over 8 years, but 2024 marked a step change in the enthusiasm and energy around this ambitious project!

The community launch in April, showcasing both local and celebrity talent, was fantastic to behold and got us off to an amazing start.



“The event had purpose, a clear and admirable vision, creativity, joy, collaboration and fun – and I felt moved and so lucky and proud to be part of this wonderful school community. The young comperes were so impressive, the music and readings were truly wonderful..... And I loved hearing a bit more about the history of the building.....It was one of those events that sort of takes you by surprise: I never knew, before, that being a parent at a local school, and being part of a community like this, could enrich our lives in this way. I’m so grateful for everything you do for the school – and for all the incredible work that everyone involved in the Hall for All project, and the OAE, is doing. Huge congratulations, and thanks.”

ACLAND BURGHELEY PARENT

“I am not connected to the school in any way and had not stepped onto the premises of the current secondary school till last night I am writing this both to thank and to congratulate all those involved with last night’s event at the school which makes me glad to be a neighbour. Anyone who didn’t come missed a remarkable evening – the students’ performances – music, singing, interviewing and presenting outshone the professional actors and musicians who also took part.”

MEMBER OF THE LOCAL COMMUNITY

Building on this momentum, the Brutal Festival which took place in July 2024 was an extremely successful participatory event which engaged students, staff and volunteers in the heritage of our school.

Year 12 students led placard-making workshops with students from across KS3, the whole school took part in creative Brutalist-inspired workshops, and three facilitated and impassioned Brutal debates took place.

The Festival culminated in a series of sponsored walks in which over 700 members of the school community including students, staff and volunteers walked from the school to some of the capital’s most iconic Brutalist landmarks:

- Year 7 walked to the National Theatre via the Brunswick Centre.
- Year 8 walked to the Barbican Centre.
- Year 9 walked to the Southbank via the Institute of Education / SOAS

There was also an inclusive walk for those unable to undertake the larger walks to the Whittington Estate where students had the opportunity to design a Brutalist bench which is now installed in our AEN (Additional Educational Needs) department.

The phenomenal sponsored walk raised over £10,000 for this vital campaign.

THE CHRISTMAS CHALLENGE 2024

BRUTAL DOORDROP

Sunday 1st December was one of the rainiest, most miserable days of the year. On this wettest of days, a small army of undeterred campaign ambassadors that included the Headteacher, students, parents and motley teachers, set forth to commence the delivery of no less than 10,000 appeal letters to the local community.

The doordrop continued like a relay-race through the week, with a medley of enthusiastic students, staff and local community members succeeding in reaching the ambitious goal. The letter consisted of an appeal from the Headteacher on one side, and a letter from a student representative on the other.

Community members remarked on how impactful the letter was. The plain white envelope stood out by being larger than average and carrying only two words - 'Dear

Neighbour' - in a friendly-looking font. It made you want to open it

As well as supporting us to exceed our Christmas Challenge, the letter has led to additional donations to the Hall for All, and has sparked the interest of the trustee of a charitable foundation. It was a fantastic example of creative marketing and other charities could learn from it.



ADVENT WINDOW

The Hall for All was also the named charity for Tufnell Park's Living Advent.

Our unveiling event (pictured below) took place on the 2nd of December. Each night a new window was unveiled and remained on view every evening until Christmas.

Our window, displaying a message of hope gained attention throughout the Christmas Challenge campaign period and the goodwill was translated into new donations to the campaign.



“This isn't just about renovating a building. For our neighbours, safe, accessible spaces like this Hall can be a lifeline. The Hall for All will give young people, families and community groups a place to connect, learn and belong. Your generosity will create a lasting impact, ensuring that this treasured space remains accessible and inspiring for generations.”

MESSAGE FROM HEADTEACHER NICHOLAS JOHN TO LOCAL RESIDENTS



COMMUNITY EVENTS

During the Big Give Christmas Challenge week we also hosted two prominent events with Camden's Integrated Youth Support Service: on Monday 2 December, the **Youth Safety Taskforce Multi-Media Competition** showcased the talent of young people from across the borough through short films, poetry and dance to highlight this important issue.

For the second event on Friday 6 December Camden's Cabinet member for Jobs, Young People and Culture presented the **Youth Achievement Celebration**, recognising the accomplishments of young people from youth projects and provisions across the borough. This was the first catered event that we had hosted in the Hall for All and was enjoyed by one and all and resulted in campaign donations.

A STUDENT PERFORMING AT THE YOUTH SAFETY TASKFORCE MULTI-MEDIA COMPETITION (top)
YOUTH ACHIEVEMENT CELEBRATION (below)



RESULTS

Momentum built in advance of, and during the Big Give Christmas Challenge week.

The school was rewarded for all the hard work, energy and enthusiasm put into this wonderful campaign by exceeding our £30,000 fundraising target, raising £36,337.92 through 172 pledges!!

This amazing achievement was made possible by drawing on the skills, resilience, and sense of humour of our team and by the brilliant support of The Big Give.



IMAGE CREDIT JASPER ABBEY

TARGET
£30,000

RESULT
£36,337.92

PLEDGES
172

“Three years of pioneering residency at Acland Burghley have made the strongest case for the renovation of the Assembly Hall. A renovated Hall gives the signal to others about what can and should be achieved when the arts are properly engaged in society and, above all, in the lives of young people.”

**CRISPIN WOODHEAD
CEO, ORCHESTRA OF THE AGE OF ENLIGHTENMENT**

“The restored Assembly Hall will be a magnificent gallery. I for one would be thrilled to show in such an important and resonant space.”

**MARK WALLINGER
TURNER PRIZE-WINNING ARTIST**